



the Montessori
School of Mallorca

February 2024

Get to know us



OUR SCHOOL

Our curriculum and pedagogy

Traditional schools have not fared well and fit poorly with how humans learn. Schools which utilise only traditional pedagogical approaches have come under close scrutiny in recent years and parents and teachers alike, are increasingly keen to explore other avenues. The school system, in a sense, teaches children to be alike, whereas the society thrives on variations in individual initiative. In our current information age, where we deal in creative ideas and entrepreneurship rather than factory production, the use of traditional models in education is questionable. Although some children manage to excel in the system regardless, the common cultural attitude is that school is **painful and not particularly fun**.

Here at The Montessori School of Mallorca, we aim to promote an **attitude towards learning** and build our team and approach around our **key values**:

- **A lifelong love for learning**
- **Becoming *citizens of the world***
- **Be independent and creative**
- **Be respectful and kind of all people and cultures**
- **Be curious and resilient learners**
- **Be excellent multilingual communicators**
- **Be proud of belonging to our Montessori community**

The management and teaching staff at The Montessori School of Mallorca are determined to support the school to be a **happy and thriving school for 3- to 16-year-olds**. The school uses **Montessori pedagogy** to support the adherence to the **British curriculum**. Underpinning

everything is the belief that all students deserve success, and that inspiring teaching and learning will lead to happy children who enjoy and value their education. The development of teaching and learning is securely based on Montessori expertise within the school and teaching staff who have had successful careers within the UK. The marriage of these two principles produces successful teaching outcomes.

With the exception of the languages department, we teach all our subjects through the medium of **English**. However, given the international context of our school, we are keen to encourage **translanguaging** skills and aim to support students who are enthused by their communication skills and aware of their own linguistic heritage in a global context. We promote an awareness of the direct link between language skills and employability in the global workplace and aim to provide IGCSE support for many languages within our school community. The time-tabled language lessons include **English, Spanish, Catalan and German**.

As a school, we passionately embrace **diversity** and actively encourage our students to nurture their **emotional well-being** while fostering excellent **empathy** skills. This is done via our behaviour policy, Montessori Peace corner practice and ultimately in the Secondary via our MMUN programme and Global Perspectives IGCSE. We aim to develop our learners' sense of identity which, in turn, allows them to understand their culture and community and become resilient multi-lingual communicators - when they leave The Montessori School of Mallorca and pursue further study.

The Montessori approach

Montessori: a scientific education method

Children's natural drive to learn often diminishes within the traditional school system, highlighting a fundamental misalignment. Learning should inspire joy, but current models fail to cultivate this enthusiasm. Resolving this mismatch is crucial for nurturing children's love for learning and unlocking their full potential.

An answer to this crisis in education came with Dr Maria Montessori, the first female doctor in Italy, a century ago. She drew on scientific studies of how children learn, develop and thrive and adjusted her schools based on trial and error. She continuously experimented with methods and built, based on results, a **detailed, empirical tested curriculum** covering all major subject areas for children from 0-12.

The importance of her insights is reflected in their similarity to educational principles generated by today's modern **psychological research and neuroscience**.

The idea that we don't have to reinvent the wheel was striking. The example of thousands of Montessori schools is before us. Montessori puts the student at the centre. It is proven to work. ... It's working on every inhabited continent, at every economic level. The approach is over 100 years old, but the ideas are timeless. The world is finally catching up with Maria Montessori's insights.

Source: Forbes, 8.2.2011



How will your child benefit from a Montessori education?

- Montessori education is based on the belief that all **children are unique individuals**, that they all have immense potential, that they want to learn and be busy. Therefore, the teacher needs to guide each child through the learning process by using materials that fit their specific needs and pace.
- Your child's education is based on making the most of your **child's individual capabilities**. Your child will have the ability to embrace challenges with **curiosity** and **enthusiasm**.
- An educational approach that emphasises **independence, freedom within limits, and respect** for a child's natural psychological, physical and social development.
- A **curriculum** which fully meets the requirements of the National Curriculum in the **UK**, works alongside it and goes well beyond it in many subjects.
- Continuous **evaluation** through observation of your child's progress, seeking further challenges to encourage new skills and knowledge. This will allow you and your children to fully enjoy this precious time of growing up in a great place like Mallorca without an unnecessary focus on one-dimensional measurements and testing.
- The knowledge that children educated in Montessori schools achieve at least equivalent and often **better outcomes** than children in other schools, not only **academically**, but also **socially**.



The seven principles of Montessori

A Montessori education is based on **seven principles**.

INTEREST: Your gut feeling is right: Research has shown that when people learn with the goal of doing well on a test, their learning is superficial and quickly forgotten. **Children (and yes, adults, too) learn better when they are interested in what they are learning.**

FREE CHOICE: Learning and well-being are improved when children have a sense of control over their lives. Although Montessori programs impose definite limits on this freedom, children are free to make many more decisions than other children in traditional classrooms: what to work on, how long to work on it, with whom to work on it, and so on.

ORDER: Recent research in psychology has proven that order in the environment is indeed very helpful to learning and development. Montessori classrooms are very organised, both physically (in terms of lay-out) and conceptually (in terms of how the use of materials progresses).

LEARNING FROM PEERS

Children in Montessori classrooms learn by imitation models, through peer tutoring and in collaboration. In mixed age classes, younger children learn from older ones by asking them questions while watching them work. Older children who are teaching younger children repeat and consolidate their knowledge and skills and obtain social skills.

7

Principles of Montessori



MOVEMENT

Our brains evolve in a world in which we move and are proactive, not a world where we sit at desks. Movement and cognition are closely entwined. Education, therefore, would involve movement to enhance learning.

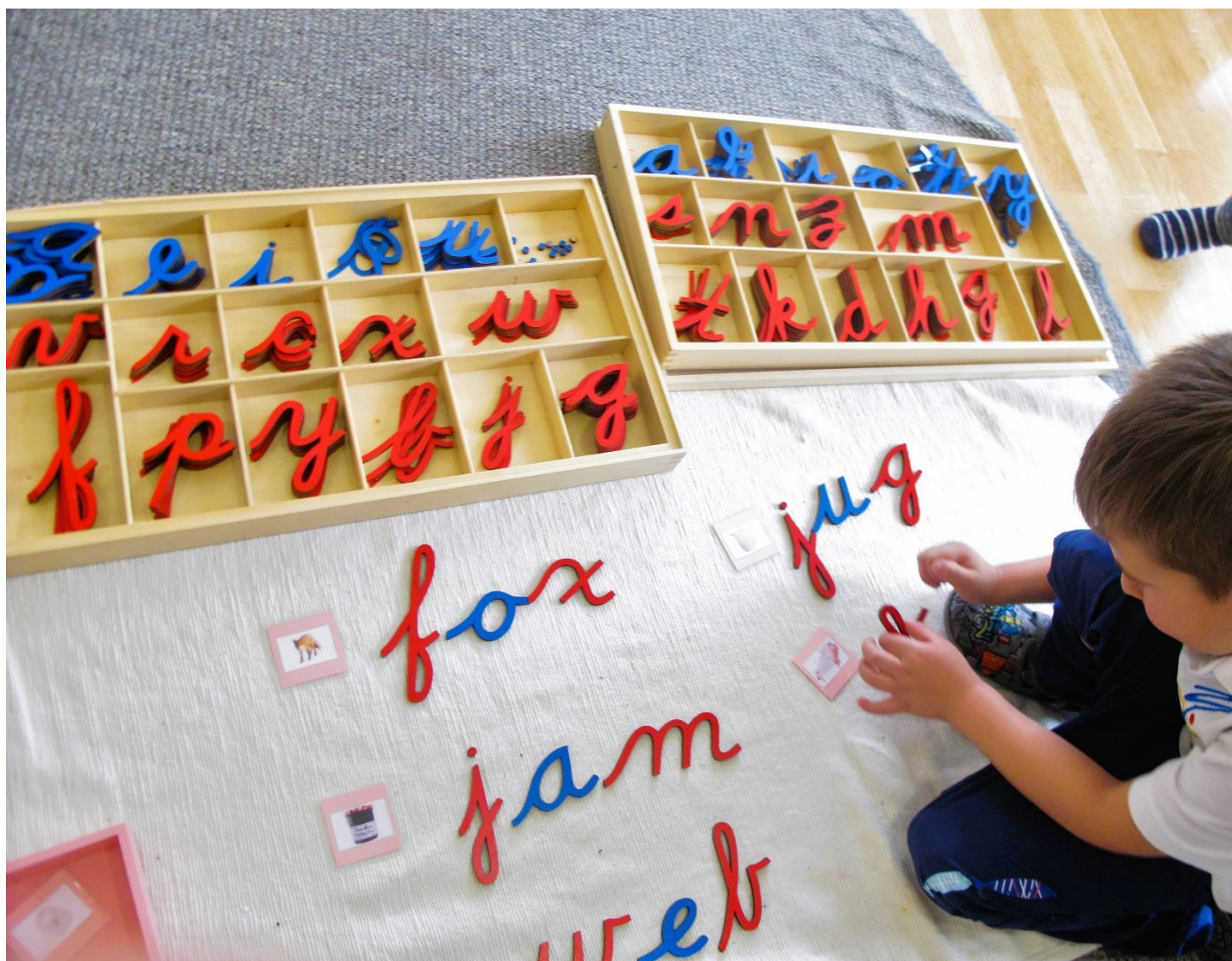
CONTEXT

Rather than learning largely from what teachers and texts say to them, children in Montessori programs learn largely by doing. Because they are doing things, rather than merely hearing and writing, their learning is situated in the context of

actions and objects. For example, children go out of the classroom and into the world to research their interests.

TEACHER GUIDANCE

Montessori teachers provide clear limits but set children free within these boundaries. They sensitively respond to children's needs while maintaining high expectations. This kind of 'authoritative parenting' seeks a middle ground between a traditional, authoritarian attitude ("Do it because we say so") and an overly permissive, child-centred approach of other progressive schools.



Our structure

Our youngest children from 3 to 5 years start in our mixed age groups **Casa** class. The class is guided by two Montessori lead teachers and one assistant.

Our **Primary** classes (5 to 11 years) consist of **Lower, Middle and Upper** Primary with mixed age groups. These classes integrate two-year groups each and are led each by a lead Teacher, an assistant, and supported by as and subject specialists for languages, music and sports.

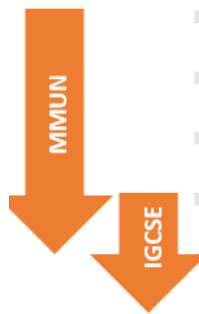
In Upper Primary, the transition starts from a purely Montessori approach to a **Montessori-**

inspired Secondary programme based on the English national curriculum and the leading up to Cambridge International General Certificate of Secondary Education and the Spanish ESO. Our secondary school consists of five classes: Year 7, Year 8, Year 9, Year 10, and Year 11. Year 10 and Year 11 are preparing for the General Certificate of Secondary Education (IGCSE) by Cambridge International. Classes are led by subject specialists.

The **Montessori Model United Nations (MMUN)** is integrated into teaching from the last Upper Primary class to the Secondary Year 10 class.

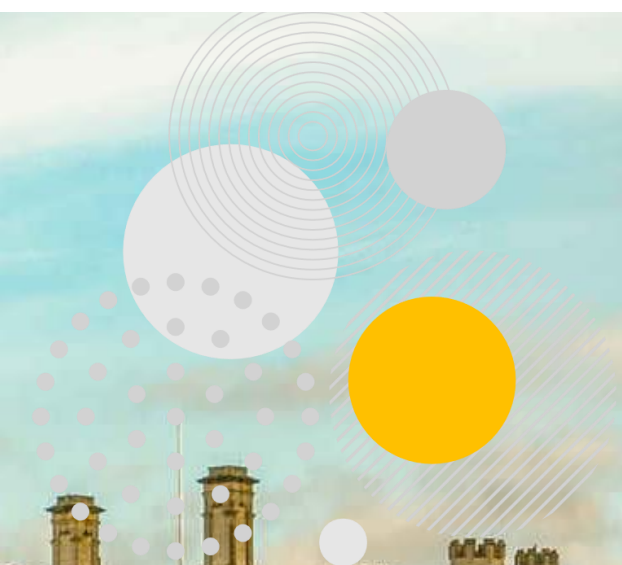
3 years	CASA	30 students	<ul style="list-style-type: none"> • Montessori Lead Teacher • Montessori Lead Teacher • Teacher Assistant
4 years			
5 years	LOWER PRIMARY	30 students	<ul style="list-style-type: none"> • Montessori Lead Teacher • Teacher Assistant • Specialists
6 years			
7 years	MIDDLE PRIMARY	30 students	<ul style="list-style-type: none"> • Montessori Lead Teacher • Teacher Assistant • Specialists
8 years			
9 years	UPPER PRIMARY	30 students	<ul style="list-style-type: none"> • Montessori Lead Teacher • Teacher Assistant • Specialists
10 years			
11 years	SECONDARY Year 7	15-20 students	<ul style="list-style-type: none"> • Secondary specialists for English Language, Literature in English, Mathematics, Science, Music, Art & Design, Spanish, Catalan, German, Global Perspectives, History, Business Studies.
12 years	SECONDARY Year 8	15-20 students	
13 years	SECONDARY Year 9	15-20 students	
14 years	SECONDARY Year 10	15-20 students	
15 years	SECONDARY Year 11	15-20 students	

Certifications: IGCSE & ESO





**Cambridge Assessment
International Education**



OUR SECONDARY PROGRAMME

The British curriculum

By the **age of 11**, children in the Montessori School of Mallorca have a very solid educational foundation. At that age, our students the Secondary Programme. By the **age of 16**, they graduate from school with the British **International General Certificate of Secondary Education** and the Spanish *Educación Secundaria Obligatoria* (ESO).

They are ready to transfer to a more mature setting and focus on an in-depth study of the **core subjects** and in time, specialise with their non-core **option choices** at the end of Year 9. We continue to encourage their **curiosity** and become confident and self-organised **problem solvers**.

We also offer opportunities for the students to explore their **creative side**; music and art and the students have sports lessons off campus at the local sports centre in Santa Maria del Cami.

In our Secondary school, we follow the **British curriculum** and use **Montessori pedagogy** to support teaching and learning. We have **small class sizes** and **subject-specific teachers** who are able to deliver tailored lessons and provide students with stimulating tasks, project work and research questions which they can carry out independently before consolidating findings as a group.



A Cambridge International School

We are a **registered Cambridge Assessment Centre** and offer the **International General Certificate of Secondary Education**, known as IGCSE. Nearly a million students in 160 countries take these exams. A Cambridge education prepares students for life, helping them develop an informed curiosity and ultimately achieve internationally recognised examinations.

The IGCSEs are **English language**-based examinations. As we deliver international GCSEs it allows us to continue with our open and strong **international orientation**. It also fits perfectly with our flagship programme throughout Upper Primary and Secondary education; The [Montessori Model United Nations](#) (MMUN) programme which involves an annual international conference.

For further information on the externally assessed examinations, please refer to our [IGCSE handbook](#).



UNIVERSITY OF CAMBRIDGE

The certificate is part of the **University of Cambridge**, with a 150-year history of providing international examinations.



TRULY INTERNATIONAL

Offering an international GCSE to our students allows us to continue with The Montessori School of Mallorca's open and strongly **international orientation**. It fits well with our flagship programme throughout Primary and Secondary education, the **Montessori Model United Nations** (MMUN).



A TRIED AND TESTED EDUCATION

Nearly a million students in over 10,000 Cambridge schools in 160 countries offer this certificate. A Cambridge education prepares students for life, helping them develop an informed curiosity and a lasting passion for learning.



**Cambridge Assessment
International Education**

Cambridge International School

We are proud to be part of
the world's largest international
community of schools.



OUR SCHOOL DAY

Timetables 2023/24*

CASA & PRIMARY

9h00 Monday - Thursday 15h30

9h00 Friday 13h30

SECONDARY

9h00 Monday - Thursday 16h30

9h00 Friday 14h30

School starts every day at **9h00**.

Casa and primary students finish the day at **15h30** from Monday to Thursday and at **13h30** on Fridays. Secondary students finish the day at **16h30** from Monday to Thursday and at **14h30** on Fridays.

For Casa and Primary students, we offer a range of **after-school clubs** from 15h30 to 16h30 from Mondays to Thursdays, and from 13h30 to 14h30 on Fridays.

** This is the current timetable for 2023/24, which will be adjusted for 2024/25.*

Arrival

The main school gate opens at **08:45am** and **closes at 09:00am**. All children should enter their classrooms by 9am.

Casa students should be dropped off at the 'kiss and drop' gate outside their classroom. Here they will be greeted by a teacher.

Primary and Secondary students can be dropped off at the gate and make their own way into their classrooms. Here they will be greeted by a teacher.

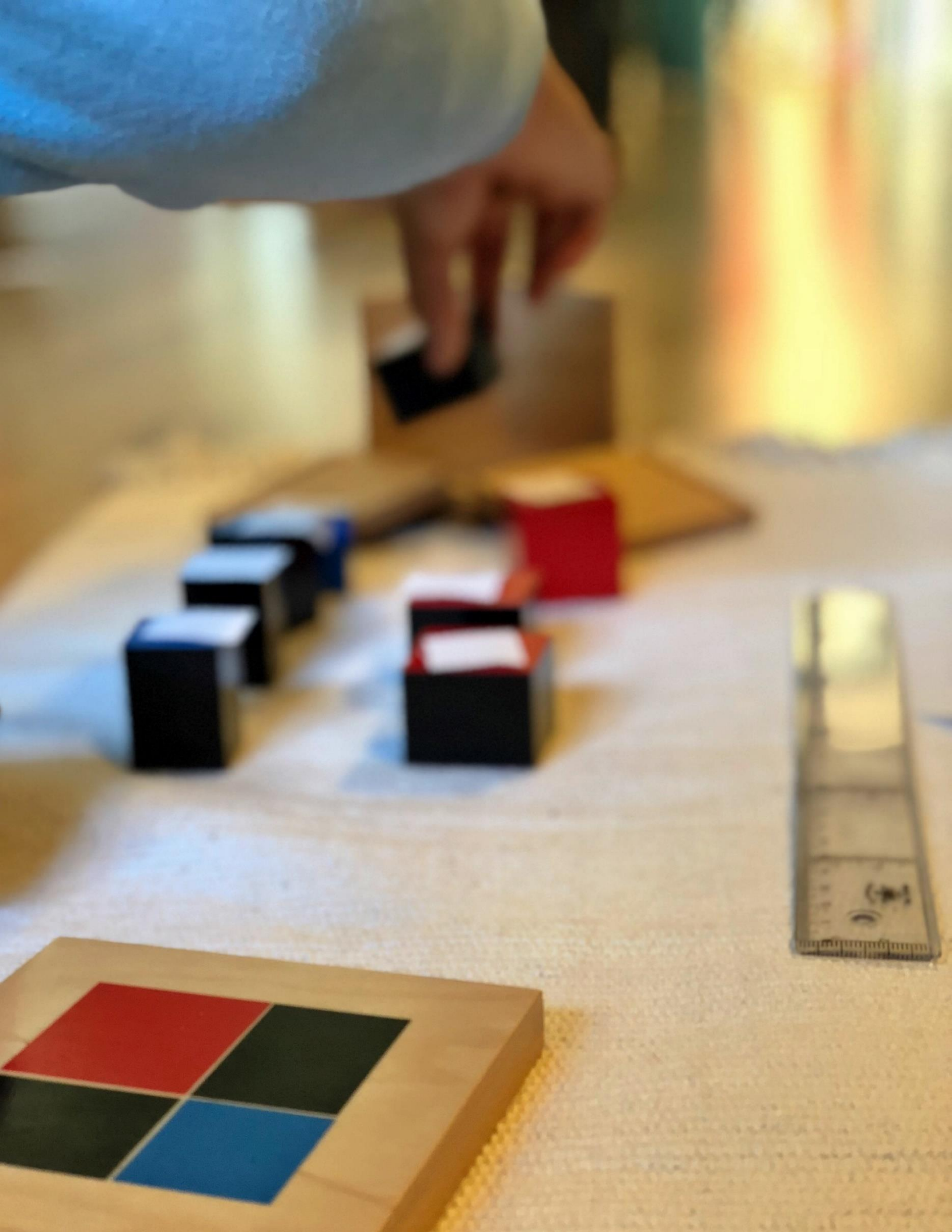
Any pupils **arriving late** need to enter via the side gate, by ringing the bell. They must first go to the

office first and will be escorted into class by a staff member, to minimise disruption of the class.

The pupils will be registered by the teacher on arrival and are considered **late** if they are not signed in and in class by **09:00**.

The **outside gate** into the school's parking area opens at **8:30am**.

Out of respect for the school community and the smooth functioning of teaching, we urge all families to come to school on time.



Pick-up

Casa and **Primary** children should be picked up from the area just outside each classroom.

Secondary students make their own way to the parking pick up areas unless parents inform the office that they prefer to pick up the children inside the school compound.

Children in **Casa** and **Primary** who attend an **after-school club** can be picked up in the area outside the club venue at **16:30** from Monday to Thursday and at **14:30** on Fridays.

Students who are 6 years and older will be allowed to **make their own way** to the parking pick up area or leave the school on their own if parents have signed a form authorising it.

Children will only be released to those **persons authorised**. Should there be any changes, please notify us in writing that a different person will be picking up your child. If you are running late, please call the office.

If your child is being **picked up by someone other than the authorised person**, you must inform the office.

If a child has **not been collected by 15:45**, or **16:45** for Secondary students, your child will be taken to the Office, an after-school club or back to their classroom so that they can be supervised. A member of staff will ring the parent(s)/guardian. If there are any problems contacting the parent(s)/guardian, the member of staff will inform the school's deputy director and cover will be arranged, until contact and arrangements can be made with the parent(s)/guardian for the child to be collected. If there is no response from the parents' or guardians' contact numbers or the emergency numbers when the premises are closing, the teacher will let the school director know and he/she will contact the police who will arrange a visit to the child's home or other measures, as required.



School uniforms

At the Montessori School of Mallorca, we have decided this approach to uniform because:

- It helps give the children the sense of belonging
- It is practical and washable - eliminating complaints about children getting their best clothes ruined!
- It eliminates competition (clothes and money)
- It is essential for all outings for security. We spot a wandering child in a big crowd easily.
- The children love it!

It is mandatory for all children to wear the school uniform at school. To ensure fairness and equal treatment of all students, there will be no exceptions to this policy.

Our school uniform for Casa, Primary and Secondary consists of a school polo shirt and a school jumper. Children have free choice of trousers/skirts/shoes etc. that they feel comfortable in and are practical for a school day.

On **sports day**, children must wear our school sports tracksuit, which consists of Please make sure all your child's property is **clearly labelled**, preferably with sewn labels. If your child does misplace property and it is not named, it will be in our lost & found box. The box will get cleared out at the end of every term and if it is not claimed within this period, it will be given to charity.

a school white t-shirt, school navy tracksuit bottoms/school navy shorts and school red hoodie.

Teachers will monitor the usage and a note will be sent home to parents if the incorrect uniform is worn by the child. After three occasions, the school office will telephone you to provide support if required.

Please order school uniforms through our website at www.montessorimallorca.org/shop/. The children can choose from a wide selection of colours for their school polo-shirts and jumpers. We will contact you once the uniforms are ready for pick up at the school's office. You must pay in **cash** when collecting the uniforms.



First time guide to school uniforms

If you are new to the school or not sure what uniform to buy, here is a brief guide to make sure you have everything ready for the new school year. Remember, school uniforms are mandatory! We recommend for:

CASA

- 4 short-sleeved polos
- 2 long-sleeved polos
- 2 jumpers
- A complete set of sport uniform (once a week): 1 sports t-shirt, 1 long sports trousers, 1 short sports trousers, 1 red hoodie sweatshirt for sports

PRIMARY

- 3 to 4 short-sleeved polos
- 2 long-sleeved polos
- 2 jumpers
- A complete set of sports uniform (twice a week): 2 sport t-shirts, 1 long sports trouser, 1 short long sports, 1 red hoodie sweatshirt for sports

SECONDARY

- 4 short-sleeved polos
- 2 kangaroo sweatshirts
- 1 long-sleeved denim shirt with long sleeves
- A complete set of sport uniform (once a week): 1 t-shirt, 1 long trousers, 1 short trousers, 1 red hoodie sweatshirt for sports



How to order: You can order the uniforms **online** on our website at www.montessorimallorca.org/shop/. In the school's office, we always have a small stock.



10


100

1

ADMISSIONS &
PAYMENTS

Tuition payments

Payments can be made **Early Bird** (1x) **annually** (1x), **termly** (3x) or **monthly** (10x).

 2024/ 2025	EARLY BIRD by 1 st May	TERMLY ^{x3} by 1 st August, by 1 st December by 1 st of March	MONTHLY ^{x10} by 5 th of every month
CASA (3-5 years)	7,804	2,712	830
LOWER PRIMARY (5-7 years)	8,832	3,096	940
MIDDLE PRIMARY (7-9 years)	8,832	3,096	940
UPPER PRIMARY (9-11 years)	8,832	3,096	940
SECONDARY (11-13 years)	10,812	3,757	1,150
SECONDARY (13-16 years)	11,746	4,082	1,250

- The school offers a 5% **discount** for **early bird** annual a 2% discount for **termly** payments.
- For **siblings**, we offer a **discount** of 5% for the second and a 7% discount for the third and subsequent sibling/s. The discount is applied to the second and subsequent siblings in the order of their birth.
- **Accident insurance** for children is included in the tuition fees.
- **School lunches, school materials, after-school activities, care clubs**, costs of the **Montessori Model United Nations (MMUN)**, **IGCSE Cambridge exam fees** and **end-of-school trips** in Secondary Year 11 are not included in the tuition fees.
- **Montessori school agendas and notebooks** as well as costs for day-time **educational outings** three times per year will be charged separately at the beginning of each academic year (100€ for Casa 3, 150€ for Primary and Secondary). This lumpsum does not cover multi-day trips that require an overnight stay.

The school reserves the right to review tuition fees and the payment schedule on an annual basis as deemed necessary for the proper functioning of the school.

Annual Payment Schedule

EARLY BIRD	ANNUAL	TERMLY X3	MONTHLY X10
<ul style="list-style-type: none"> by 1st May 	<ul style="list-style-type: none"> by 1st July 	<ul style="list-style-type: none"> by 1st August by 1st December by 1st March 	<ul style="list-style-type: none"> by the 5th of every month

Monthly invoices of student accounts will be sent to you by the school's office; however, the timely payment of school fees is the parent's responsibility.

Payment methods

We offer parents the following payment modalities:

- By **direct debit**
- By **credit card**
- By **bank transfer**

First-time enrolment and deposit

- We require a **deposit** of **€1,500** per child at time of enrolment; the deposit will be refunded once your child leaves the school as long as the child has been at the school for at least a full academic year.
- There is a one-time **enrolment fee** of €900 (non-refundable) and a €720 (non-refundable) with the **sibling** discount.

Re-enrolment fee

For subsequent years, an **annual re-enrolment fee** of **€300** for each child is due by the end of February to guarantee a place for the student for the next academic year. This fee will be **deducted** from your school fees for the following year in September. This fee is **non-refundable** should you decide not to take the place.

Other payments

School Lunch

School lunch is **optional**. Prices are **€110 per month** or €1,000 if paid annually. Lunch payments must be made on the same dates as the school fees. Ad hoc lunch costs €8 and must be ordered in the school's office before **9:15 am** on the day required. No discounts are made for holidays or absences.

Uniforms

Payments for **uniforms** ordered through our online shop at www.montessorimallorca.org/shop/ must be made by *cash* when picking up the uniforms at the school's office.

Educational outings

In all classes, we regularly organize education outings, typically once per term, and other school trips, including the Montessori Model United Nations. In these cases, you will be sent a permission slip with information and costs. These costs will be automatically added to your statement of accounts.

Where a child has been withdrawn from the school and applies for re-admission, no registration fee will be payable if the child is re-admitted (subject to availability of a place) within a year after the date the child left the school. The Enrolment Fee, Re-Entry fee and other fees payable, all at the then prevailing rate, are required to be paid prior to such re-admission and the whole application process.





Office hours

Monday to Thursday 9am until 16.30pm

Friday 9am until 14.30pm

Phone +34 971 140 170

Please note that between 12:30pm and 13.30pm is our lunch time. Calls may not be answered immediately.

The office is closed on school holidays (specified on [school calendar](#)).





The Montessori School of Mallorca

Carrer Batlle Josep Canyelles, 9
07320 Santa María del Camí
Mallorca
Balearic Islands – Spain

Email: office@montessorimallorca.org
WhatsApp: +34 634 315 989
Phone: +34 971 140 170
Mobile: +34 634 315 989
Website: www.montessorimallorca.org

